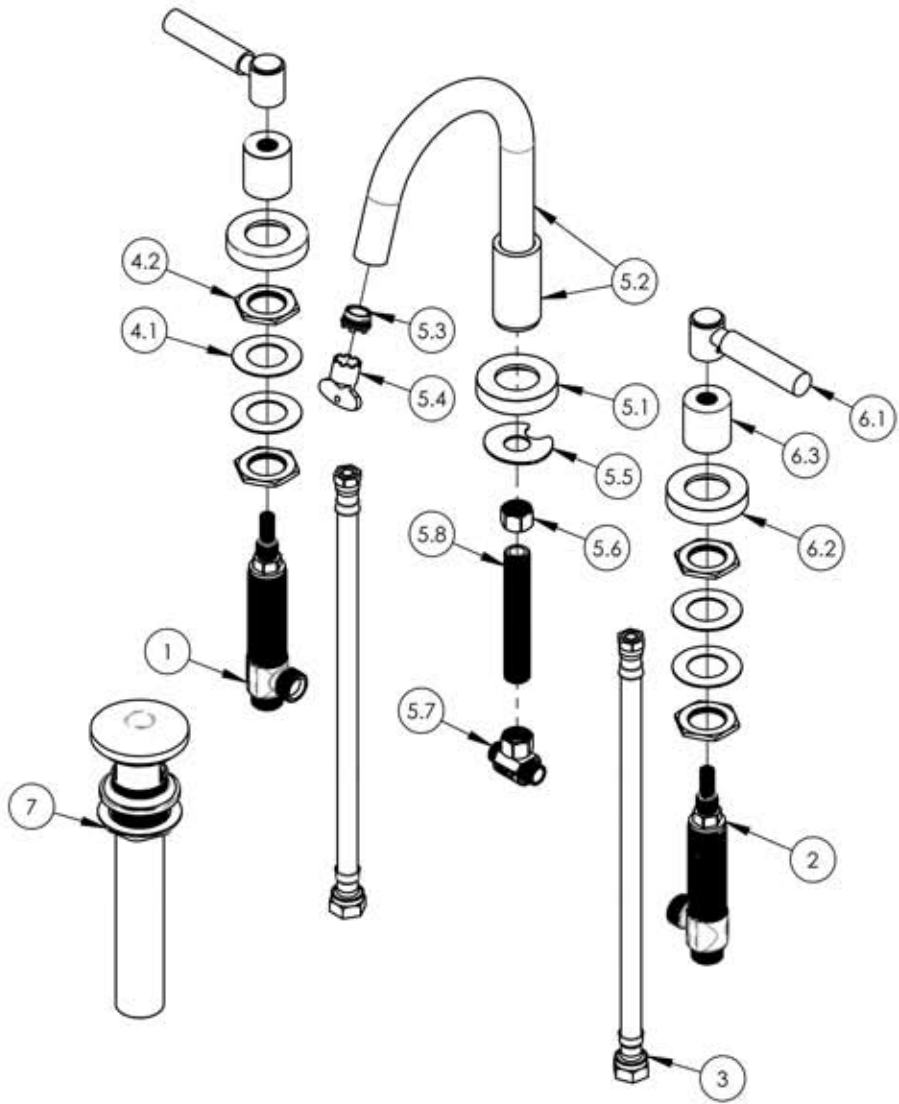


A

B

C

D



ITEM NO.	PART NUMBER	DESCRIPTION	QTY.
1	1-149	WIDESPREAD VALVE LAV 16PT. HOT, ONLY	1
2	1-150	WIDESPREAD VALVE LAV 16PT. COLD, ONLY	1
3	10962	HOSE, 3/8" COMP. X 1/2" NPSM - 12'L	2
2	2-203	MOUNTING NUT KIT, WIDESPREAD LAV	2
4.1	92252	WASHER, 1-1/32" ID 1-13/16" OD	2
4.2	92251	HEX NUT, 1"-20 THREAD	2
5	3-180/00	WIDESPREAD FAUCET GOOSENECK LOW SPOUT, BASIC	1
5.1	P02035_2/00	ESCUTCHEON, CONTEMPORARY	1
5.2	2-165	SUB ASSY. SPOUT LOW ARC. WIDESPREAD BASIC	1
5.3	11428	AERATOR CACHE TINY JUNIOR 1.2GPM 43.2260.450 PINK	1
5.4	P05022	AERATOR, BASIC KEY, PLASTIC GREEN	1
5.5	92174	WASHER MOUNT WIDESPREAD (3/8")	1
5.6	10746	NUT, 3/8"-18 NPSL	1
5.7	1-112	TEE VALVE, 3/8" NPSM X 3/8" COMPRESSION	1
5.8	10745	THREAD ALL, 3/8"-18 NPSL - 3/8"NPT	1
6	3-441/00	ASSY. LEVER HANDLE, BASIC	2
6.1	3-408/00	ASSY. LEVER HANDLE, BASIC SERIES,	1
6.2	P02035_2/00	ESCUTCHEON, CONTEMPORARY	1
6.3	P02035_1	HUB ESCUTCHEON, CONTEMPORARY TOP	1
7	3-517/00	PUSH TO CLOSE DRAIN	1

E

ALL	C	REMOVE POP UP COMPONENTS, ADD PUSH DOWN DRAIN. UPDATE VALVES	4/25/2019	AMM
ZONE	REV.	DESCRIPTION	DATE	

REVISIONS	
1261 LOGAN AVENUE COSTA MESA, CALIFORNIA 92626 PHONE: 714.361.4800 FAX: 714.617.3120	PHYL RICH Defining Luxury Since 1959

PROPRIETARY AND CONFIDENTIAL

THE INFORMATION CONTAINED IN THIS DRAWING IS THE SOLE PROPERTY OF RKS MANUFACTURING. ANY REPRODUCTION IN PART OR AS A WHOLE WITHOUT THE WRITTEN PERMISSION OF RKS MANUFACTURING IS PROHIBITED.

NEXT ASSY	USED ON	FRACTIONS ±1/64"	DECIMALS X.X: ±.1 X.XX: ±.01 X.XXX: ±.005	ANGULAR ±.5°
APPLICATION		NAME DATE		
MATERIAL		DRAWN 10/12/2015		
FINISH		CHECKED GRE		

DO NOT SCALE DRAWING

**WIDESPREAD FAUCET, LEVER HANDLE,
LOW SPOUT, BASIC SERIES.**

SIZE **A** ASM/PRT NO. **D131/00** REV **C**

SCALE: 1:5 WEIGHT: lbs. SHEET 1 OF 2

5

4

3

2

1